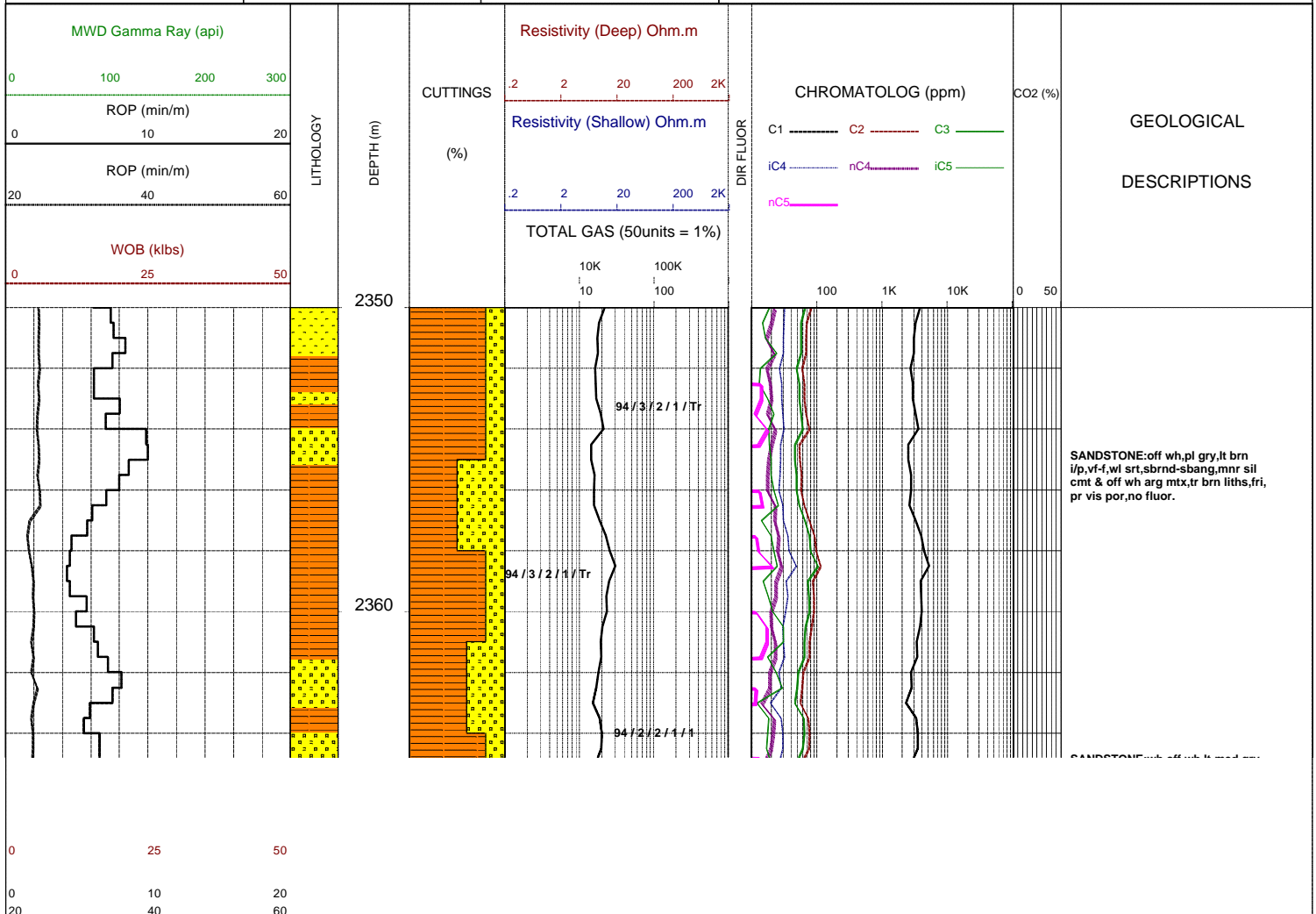


GLENAIRE 1

Field :	Kelly Bushing : PEP 160	Rig : ENSIGN 32	Open Hole:	Cased Hole:	Loggers : J.SUTTON
Block:	Ground Level : STATUS	Spud Date : 08/09/2006	17.5" (12.25") 307m	13.375" (9.625") 303.5m	N.LUIS
State : VICTORIA	GRS80 Ellipsoid MGA94 Zone54 :	TD Date : XX/XX/2006	12.25" (8.5") 1255m	9.625" (7.0") 1252m	J.TRETHEWEY
Country : AUSTRALIA	Lat. : 37°34'47.03S	Total Depth : VVV	8.5" XXXXm		
Scale : 1/ 200	Long. : 140°59'52.25E	Final Status : WWW		RRRR SSSS AAA	

LITHOLOGY	ACCESSORIES	DRILLING DATA	ABBREVIATIONS
Conglomerate Coarse Sandstone Med Sandstone Calcareous Sst Silty Sandstone Siltstone Carb. Siltstone Calc. Siltstone Clay Limestone Dolomite Coal Anhydrite Gypsum Igneous Volcanic Metamorphic Cement	Pyrite Siderite Glauconite Feldspar Mica Ferrous Chert Calcareous Dolomitic Carbonaceous Lithoclast Breccia Foraminifera Corals Inoceramus Bryozoa Plant remains Fossils	Casing Shoe Bit Trip Wiper Trip Core DST Deviation Survey MUD DATA MW - Mud Weight (lb/gal) FV - Funnel Viscosity (s/qt) PV - Plastic Viscosity (cps) YP - Yield Point (lb/100ftsq) Gel - Gel Strength (10sec) WL - Water Loss (cc/30min) pH - Acidity / Alkalinity Ck - Cake (32nd/inch) O/W/S - Oil / Water / Solids Cl - Chlorides (mg/L) K+ - Potassium (mg/L) Rmf - Res. Mud Filtrate (ohmm)	BOPD - Barrels of Oil Per Day BWPD - Barrels of Water Per Day CG - Connection Gas CO - Circulate Out COND - Condensate c/c - Crush Cut DST - Drill Stem Test FLOW - Flow Rate (gal/min) GCM - Gas Cut Mud GCW - Gas Cut Water GTS - Gas To Surface INJ - Injection of Mist (bbls/hr) LCM - Lost Circulation Material MMCFD - Million Cubic Feet / Day NGTS - No Gas To Surface NOTS - No Oil To Surface NFTS - No Flow To Surface OCM - Oil Cut Mud OG - Over Gauge OH - Open Hole OTS - Oil To Surface Q - Flow Rate REC - Recovery FLUOR - Fluorescence ROP - Rate Of Penetration RPM - Revolutions Per Minute RTSTM - Rate Too Small To Measure Rw - Resistivity water r/r - Ring Residue SCFM - Standard Cubic Ft/Min (air) SGCM - Slightly Gas Cut Mud SPM - Strokes Per Minute SPP - Stand Pipe Pressure SWC - Side-Wall Core TG - Trip Gas WOB - Weight On Bit



WOB: 4-6 kibs
RPM: 175-210
SPP: 1550-1700 psi
FLW: 444 gpm

MW: 9.3
FV: 46
PV: 12
YP: 17
Gels: 5/14
WL: 8.4
CK: 1
Sol: 4.8
pH: 9.5
Cl: 27k

WOB: 4-6 kibs
RPM: 175-210
SPP: 1700-1800 psi
FLW: 444 gpm

2370

2380

2390

2400

2410

2420

95/2/2/1

94/2/2/1/1

94/2/2/1/1

95/2/1/1/1

NO CO2
NO H2S

SURVEY @ 2374m: 6.0° 9T

COAL:(Tr)blk,dk brn,ea,vit i/p,
silty,brit frm,sbbkly,hckly-unevn.

PULL OUT OF HOLE TO CHANGE
BHA @ 2386m.

Bit 3 RR:HYCALOG DSX519M-A5
Size: 8.5" Jets: 5x12
In: 2386m Out: xxxxxm
Run: xxxx1m Hrs: xx.xx
Cond: x-x-xx-x-x-x-xx-xx

SILTY CLAYSTONE:lt-med gry,occ
dk gry,grn/gry,occ brn,com aren
grd to SLTST,occ-com micmic,tr
feld liths,tr carb spks,sft-mod hd,
sbbkly.

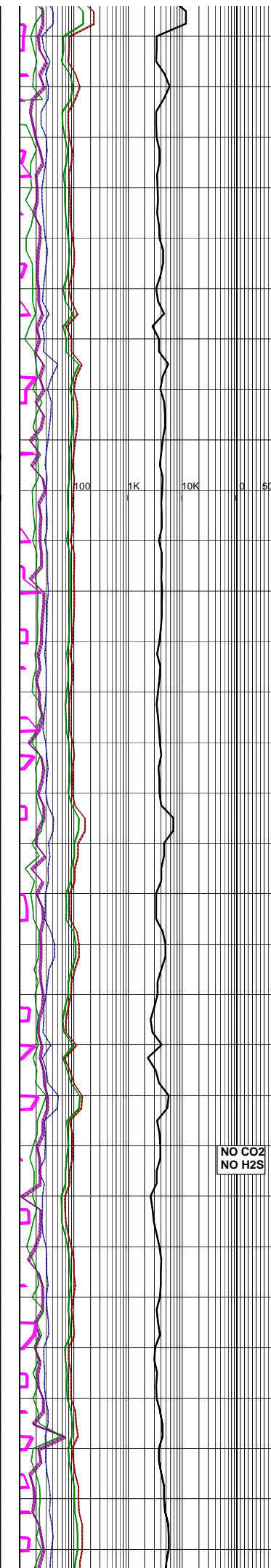
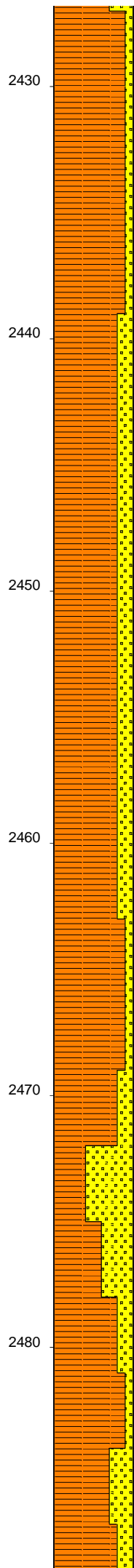
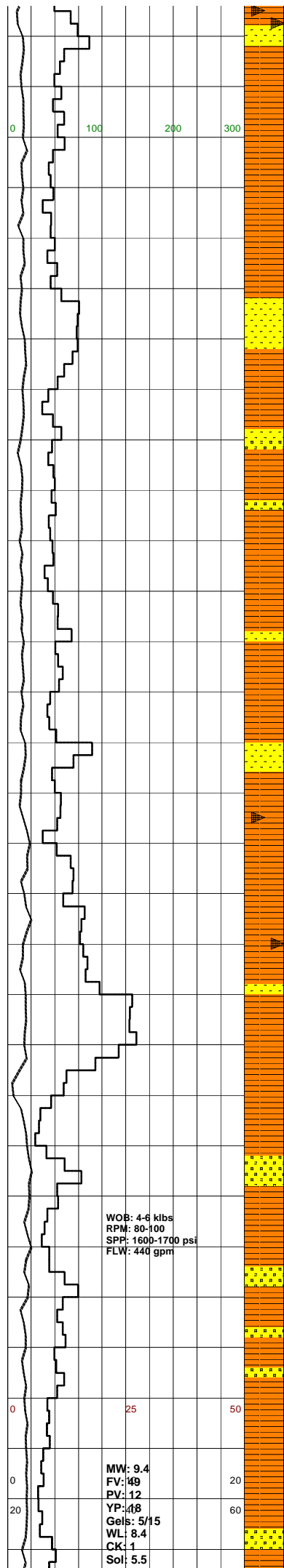
SANDSTONE:pl gry,off wh,lt brn
i/p,vf-f,wi srt,sbrnd-sbang,mod calc
& sil cmt,abdt loc wh arg mtx,
tr dk brn liths,pred mod hd,mnr fri,
v pr vis por,no fluor.

COAL:(Tr)pred dk brn,blk i/p,ea,
occ sbvit,sity i/p,st,tr brit,sbbkly,
unevn.

NO CO2
NO H2S

SILTY CLAYSTONE:lt-med gry,lt
brn/gry,aren i/p,grd to SLTST,tr
micmic,pred mod hd,frm i/p sbbkly.

SANDSTONE:wn,ort wn,lt-med gry,
f-vf,occ med,mod srt,sbang-sbrnd,
occ sil cmt,wk calc cmt,abdt arg
mtx,tr feld,abdt blk,brn,gm
liths,mod hd,pr vis por,no flour.



SANDSTONE: off wh, pl gry i/p, vf-f, mod wl srt, sbang-sbrnd, mod strg sil cmt, com off wh arg mtx, tr dk brn liths, mod hd, pr vis por, no fluor.

SILTY CLAYSTONE: lt-med gry, lt brn/gry, pl grn/gry i/p, aren i/p, mnr rd liths, occ micmic, tr carb spks & flks, frm-mod hd, sbbkly-sbfiss.

SANDSTONE: off wh, pl gry/brn, vf-f, mod wl srt, sbrnd, com mod strg sil cmt & pl gry/off wh arg mtx, com dk brn liths & carb spks, mod hd, occ hd, no vis por, no fluor.

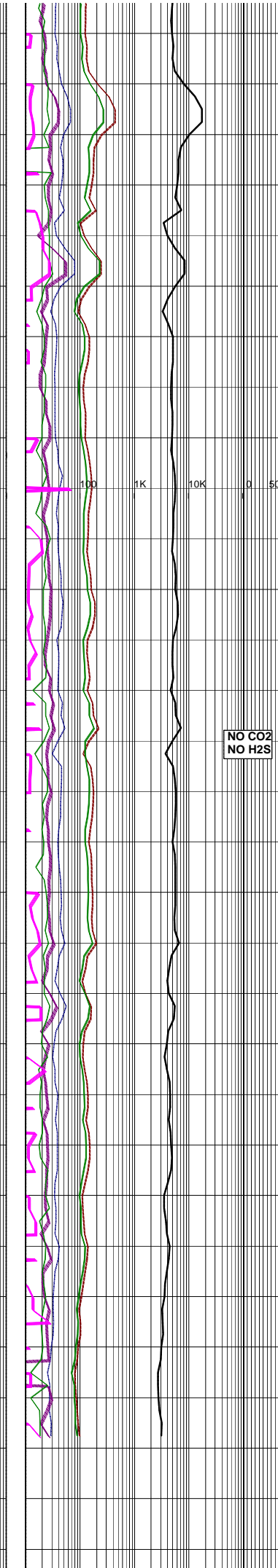
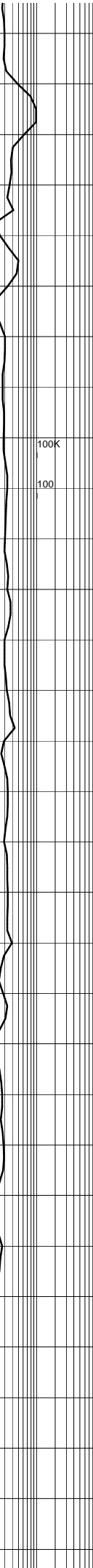
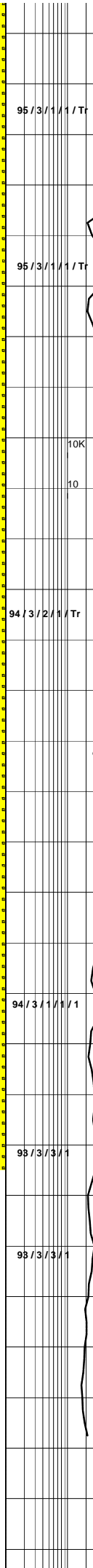
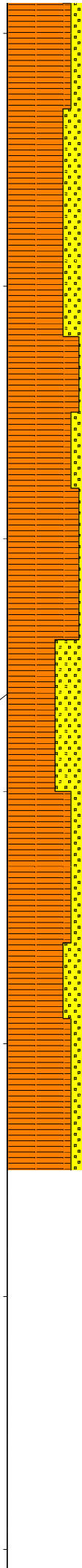
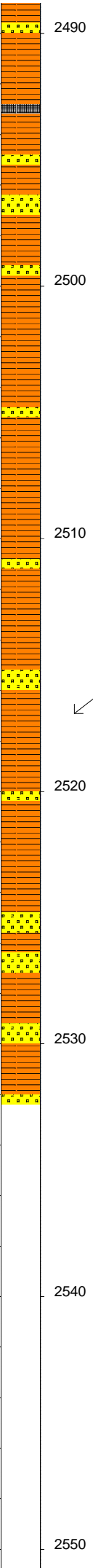
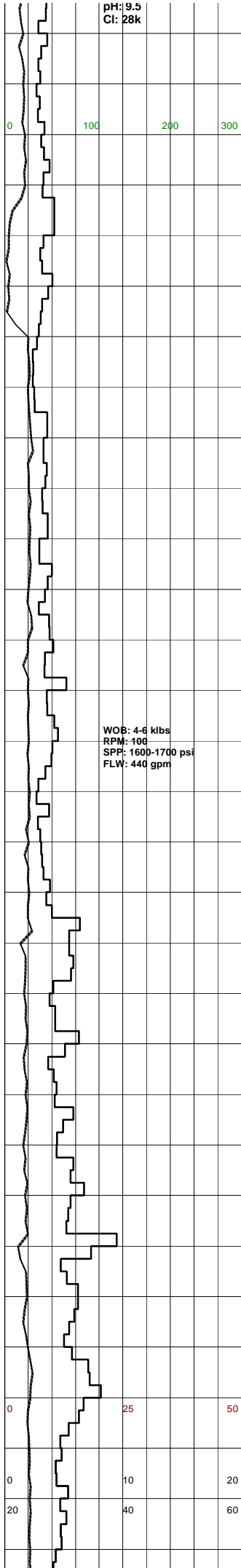
COAL: (Tr) blk, dk brn, ea, stly, frm, sft i/p, sbbkly-sbfiss, unevn.

NO CO2
NO H2S

SANDSTONE: wh, off wh, lt gry, vf-f, occ med, pr-md srt, wk calc cmt, occ sil cmt, abdt off wh arg mtx, abdt blk, brn fld, mod hd, pr vis por, no fluor.

SILTY CLAYSTONE: lt-med gry, occ dk gry, lt-med brn, arg, aren i/p, grd to SLTST, micmic, tr liths, tr carb

pH: 9.5
Cl: 28k



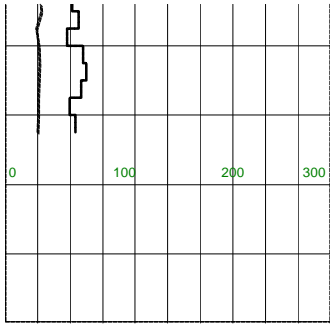
spks,sft-mod hd,sbbkly.

COAL:(Tr)blk,dk brn,ea,slty,frm,sft
i/p,sbfiss-sbbkly,unevn.

SILTY CLAYSTONE:lt-med gry,occ
dk gry,lt-med brn,arg,aren i/p,
grd to SLTST,micmic,tr liths,tr
carb spks,sft-mod hd,sbbkly.

SURVEY @ 2517m: 5.25° 17T

SANDSTONE:wh,off wh,lt gry,vf-f,
occ med,pr-md srt,wk calc cmt,
occ sil cmt,abdt off wh arg mtx,
abdt blk, brn fld,mod hd,pr vis
por,no flour.



2560

